

JOB NAME

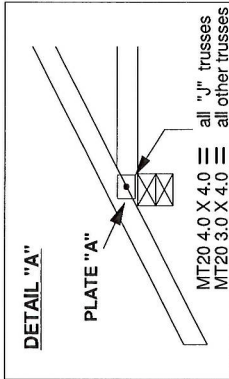
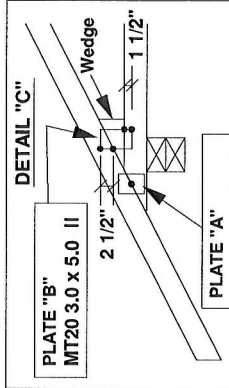
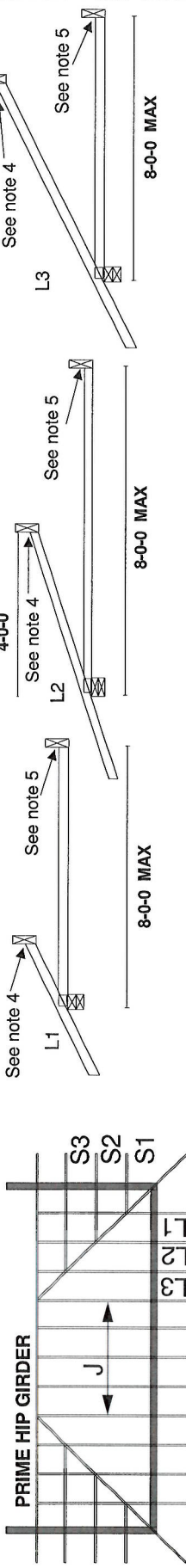
DETAILS

JOB DESC.

HIP END FRAMING

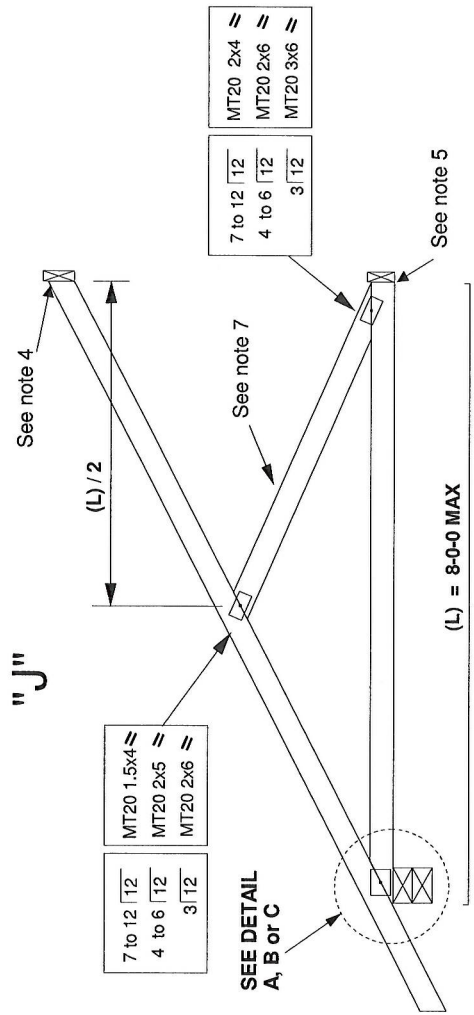
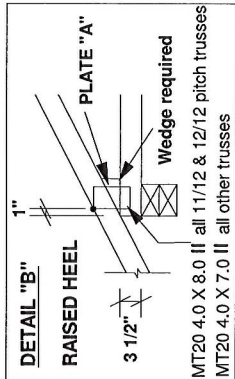
DRAWING NO.

B37019J

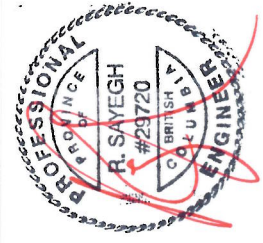


DETAIL "C"

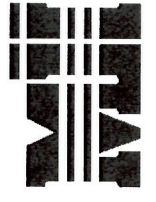
SLOPE	MAX CANTILEVER	PLATE "B"	WEDGE SIZE
3/12	17"	3.0 X 5.0	2 X 3
4/12	14"	3.0 X 5.0	2 X 3
6/12	12"	3.0 X 5.0	2 X 4
7/12	10"	3.0 X 5.0	2 X 4
8/12	9"	3.0 X 5.0	2 X 6
9/12	8"	3.0 X 5.0	2 X 6
10/12	7"	3.0 X 5.0	2 X 6



- NOTES:**
1. ALL LUMBER SHALL BE 2x4 SPF OR D. Fir No. 2 DRY OR BETTER.
 2. THIS TRUSS IS DESIGNED FOR HOUSING AND SMALL BUILDING REQUIREMENTS OF PART 9 NBCC 2010. WHERE GROUND SNOW LOAD IS 60.0 PSF OR LESS AND RAIN LOAD DOES NOT EXCEED 12.53 PSF; TOP CHORD DEAD LOAD IS 6 PSF OR LESS; BC LIVE LOAD IS 0 PSF AND BC DEAD LOAD IS 7 PSF.
 3. HIP RAFTER DESIGN SHALL CONFORM TO SECTION 9.23.14.6 OF NBCC 2010.
 4. FASTEN HIGH END OF RAFTERS USING MITEK CANADA INC. "BEARING ANCHORAGE BY TOE-NAILS FOR LATERAL CAPACITY" STANDARD DETAIL B37019H1.
 5. FASTEN RIGHT END OF CEILING USING MITEK CANADA INC. "BEARING ANCHORAGE BY TOE-NAILS FOR LATERAL CAPACITY" STANDARD DETAIL B37019H1.
 6. OVERHANG LENGTH SHALL NOT EXCEED 2 FT.
 7. WHEN SETBACK IS 6 FT OR LESS, DIAGONAL WEB MAY BE OMITTED AND HIGH END OF TOP CHORD SHALL BE CONNECTED AS PER NOTE 4.
 8. ALL PLATES SPECIFIED ARE PRESSED INTO BOTH FACES OF THE TRUSS.
 9. MITEK REFERENCE PAGE MI-7473C FORMS AN INTEGRAL PART OF THIS DETAIL.
 10. THIS DETAIL IS NOT VALID AFTER APRIL 30, 2013



SEP 16 2011



MiTek Canada, Inc.
100 Industrial Rd.
Bradford, Ontario, L3Z 3G7