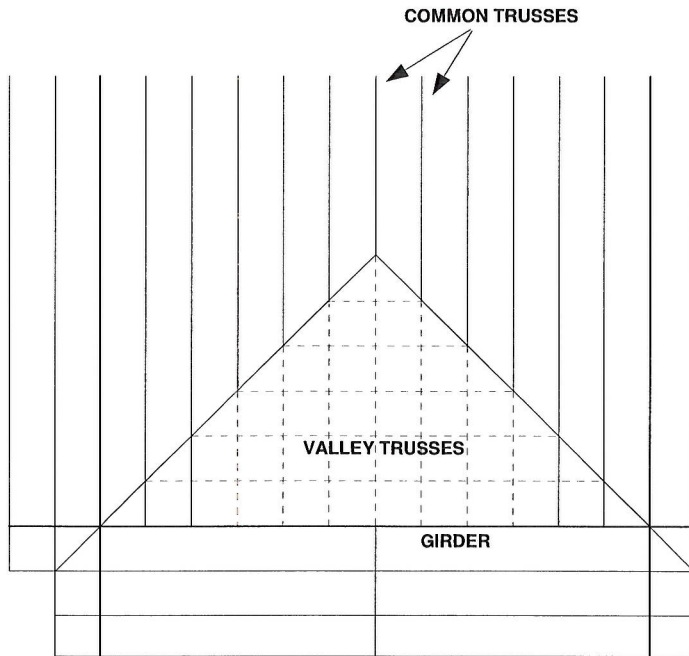


VALLEY SET DETAIL

DRAWING No.: B37019L

VALLEY SET ROOF FRAMING PLAN



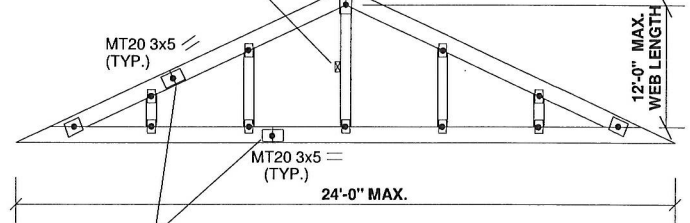
VALLEY TRUSS LUMBER (SPF OR D- Fir, No. 2 DRY OR BETTER) :

TOP CHORD SIZE : 2X4
 BOTTOM CHORD SIZE : 2X3 or 2X4
 WEB SIZE : 2X3 or 2X4

CONTINUOUS LATERAL BRACE
 IF REQUIRED (SEE NOTE # 9 BELOW)

PANEL LENGTH
 48" MAX. (TYP.)

MINIMUM SLOPE = 2/12
 MAXIMUM SLOPE = 12/12



SPLICES (IF REQUIRED) MUST BE LOCATED AT THE 1/4 POINT OF A PANEL. SPLICES MAY NOT BE LOCATED NEAR A PITCH BREAK OR IN THE FIRST PANEL ADJACENT TO THE HEEL. IF BEVELING THE BOTTOM CHORD, SPLICE PLATES MUST BE FLUSH WITH THE TOP EDGE OF THE BOTTOM CHORD.

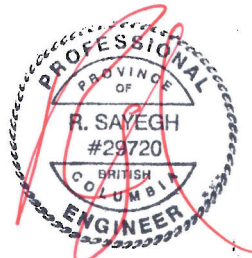
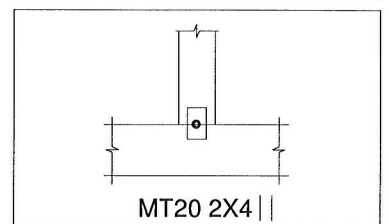
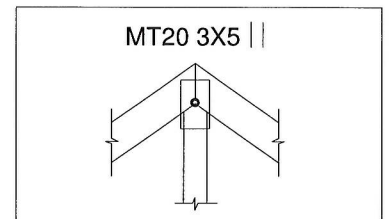
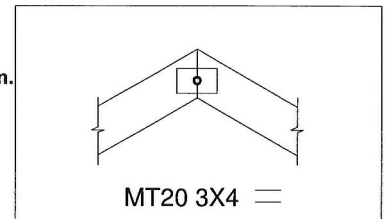
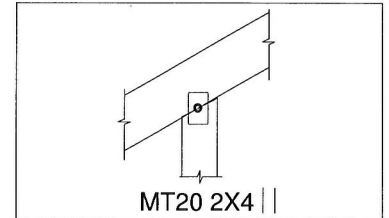
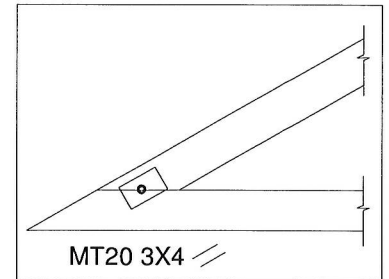
NOTES:

(1) Specified roof loads are not to exceed the loads shown below:

TOP CHORD LL = 60.0 PSF OR LESS
 TOP CHORD DL = 6.0 PSF OR LESS
 BOTTOM CHORD LL = 0 PSF
 BOTTOM CHORD DL = 7.0 PSF

TOTAL LOAD = 73.0 PSF OR LESS

- (2) Use MT20 3x5 plates for top and bottom chord splices when required.
- (3) Valley trusses assume continuous support by the truss system underneath.
- (4) Spacing of both valley set and truss system underneath must not exceed 24" C/C.
- (5) Bottom chord may be beveled to match the slope of the intersecting roof. If beveling, a minimum 2x6 bottom chord is required.
- (6) Truss plates are required on both front and back face of the truss and centered at each joint.
- (7) This detail is not valid for projects that require a wind analysis to be incorporated into the truss design.
- (8) Valley trusses must be toe-nailed to each supporting truss with 2 - 3" common spiral / wire nails.
- (9) One continuous lateral brace is required at 1/2 length of any web that exceeds 6 ft in length. Maximum allowable web length is 12 ft.
- (10) This detail applies to Part 9 of NBCC 2010 designs only.
- (11) Maximum vertical stud spacing shall not exceed 48" C/C.
- (12) This detail is not valid after April 30, 2013



SEP 16 2011



MiTek Canada, Inc.
 100 Industrial Rd.
 Bradford, Ontario, L3Z 3G7