



TYPE 2 JACKPOST

- HEAVY DUTY ADJUSTMENT ASSEMBLY FOR MAXIMUM LOADS
- LOCK BOLT FOR EASY ADJUSTMENT
- MODULAR DESIGN FOR GREATEST JOB SITE FLEXIBILITY
- SQUARE POST FOR EASY AND ACCURATE CUT DOWN

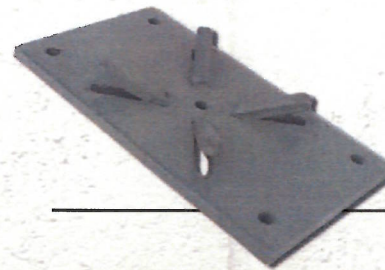
Lock Bolt



Lock Bolt and Adjustment Assembly



Square Tube Design



Heavy Duty Base Plate

Light Duty Type 2 Column								
USP Stock No	Adjustable Height		Allowable Load (100%) ^{1,3}			Factored Resistance (100%) ^{2,3}		
	In	mm	kN	Lbs	kg	kN	Lbs	kg
T2JPLD84	80 - 84	2032 - 2134	75.2	16900	7665	115.8	26000	11813
T2JPLD90	86 - 90	2184 - 2286	88.7	15000	6805	105.4	23700	10750
T2JPLD96	92 - 96	2337 - 2438	60.5	13600	6170	97.4	21800	9936
T2JPLD102	98 - 102	2489 - 2591	56.9	12800	5805	89.2	20050	9095
T2JPLD108	104 - 108	2642 - 2743	54.3	12200	5535	82.2	18400	8385
T2JPLD120	116 - 120	2946 - 3048	48.5	10900	4945	69.8	15600	7119

Heavy Duty Type 2 Column								
USP Stock No	Adjustable Height		Allowable Load (100%) ^{1,3}			Factored Resistance (100%) ^{2,3}		
	In	mm	kN	Lbs	kg	kN	Lbs	kg
T2JPHD84	80 - 84	2032 - 2134	176.1	39600	17960	222.5	49900	22687
T2JPHD90	86 - 90	2184 - 2286	157.9	35500	16100	206.4	46400	21045
T2JPHD96	92 - 96	2337 - 2438	142.8	32100	14560	193.5	43400	19728
T2JPHD102	98 - 102	2489 - 2591	133.4	30000	13610	179.3	40300	18280
T2JPHD108	104 - 108	2642 - 2743	125.9	28300	12835	167.7	37600	17104
T2JPHD120	116 - 120	2946 - 3048	119.2	26800	12155	145.5	32700	14838

1) The Allowable Load values have been determined thru testing standards prescribed in the National Research Council Evaluation Directive for Adjustable Steel Columns using a safety factor of 2.25.
 2) The Factored Resistance (ϕP_n) values are established in accordance with the Canadian Standards Association S16, Design of Steel Structures, using a Resistance Factor $\phi = 0.90$.
 3) The bearing resistance of the supported beam should be checked by the building designer using the appropriated CSA standard.

Updated product information is designated in bold font.

Consult USP for pricing.

This drawing is not valid after February 28, 2014.



FEB 21 2012



For further information call 1.800.328.5934/1.952.898.8772 or log on to our website at www.USPconnectors.com

